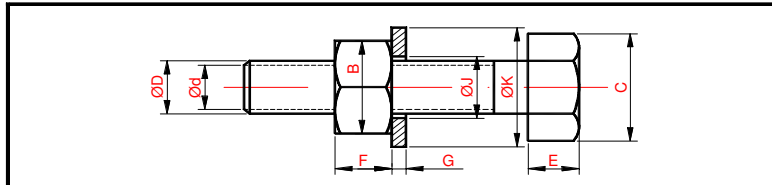




CARACTERISTICAS DIMENSIONALES DE LOS TORNILLOS HEXAGONALES Y ALLEN



SISTEMA INTERNACIONAL												
TORNILLO				TUERCA		ARANDELA			Paso	Ø Broca a Taladrar	Sección en cm ² .	
D	C	E	d	B	F	G	J	K				
3	5.75	3	2.16	5	2.5	0.8	3.5	8	0.6	2.4	0.036	
4	8.1	4	2.94	7	3.2	1	4.5	10	0.75	3.25	0.068	
5	9.25	4.5	3.73	8	4	1.2	5.5	12	0.90	4.1	0.109	
6	11.6	5	4.59	10	5	1.5	7	14	1	5	0.166	
8	16.2	6	6.24	14	6.5	2	9	18	1.25	6.75	0.306	
10	19.7	7	7.89	17	8	2.5	11	22	1.5	8.5	0.489	
12	24.3	9	9.54	21	10	2.5	14	27	1.75	10.25	0.714	
14	26.6	10	11.18	23	11	3	16	30	2	12	0.983	
16	30	12	13.18	26	13	3	18	33	2	14	1.37	
28	33.5	13	14.48	29	15	3.5	20	36	2.5	15.5	1.65	
20	37	14	16.48	32	16	4	22	40	2.5	17.5	2.13	
22	40.4	15	18.48	35	18	4	24	45	2.5	19.5	2.68	
24	43.9	17	19.78	38	19	4.5	27	50	3	21	3.07	
27	48.5	19	22.78	42	22	4.5	30	55	3	24	4.07	
30	53.2	21	25.07	46	24	5	33	60	3.5	26.6	4.94	
33	57.8	23	28.07	50	26	5	36	65	3.5	29.5	6.19	
36	62.4	25	30.37	54	30	6	39	70	4	32	7.24	
39	67	27	33.37	58	32	6	42	75	4	35	8.75	
42	72.8	29	35.67	63	34	7	45	80	4.5	37	9.99	
45	77.4	32	38.67	67	36	7	48	85	4.5	40	11.74	

Diámetro D En mm.	SISTEMA WHITWORTH												
	TORNILLO				TUERCA		ARANDELA			Nº hilos por 1"	Paso	Ø Broca a taladrar	Sección en cm ²
	D	C	E	d	B	F	G	J	K				
3.17	1/8"	7	3.5	2.36	6	2.8	0.8	3.75	8	40	0.635	2.6	0.044
4.76	3/16"	9.25	4.5	3.4	8	4	1.2	5.25	12	24	1.058	3.7	0.091
6.35	1/4"	13.9	5	4.72	12	5.5	1.5	7.25	16	20	1.270	5	0.175
7.93	5/16"	16.2	6	6.13	14	6.5	2	9	18	18	1.411	6.5	0.295
9.52	3/8"	19.7	7	7.49	17	8	2.5	10.25	22	16	1.588	7.9	0.441
12.70	1/2"	26.6	10	9.99	23	11	3	14.50	30	12	2.117	10.6	0.784
15.87	5/8"	30	12	12.92	26	13	3	18	33	11	2.309	13.6	1.311
19.05	3/4"	37	14	15.80	32	16	4	22	40	10	2.540	16.5	1.960
22.22	7/8"	40.4	15	18.61	35	18	4.5	25	50	9	2.822	19.4	2.720
25.40	1"	48.5	19	21.33	42	22	4.5	28	55	8	3.175	22.2	3.575
28.57	1 1/8"	53.2	21	23.93	46	24	5	31	60	7	3.629	24.9	4.497
31.75	1 1/4"	57.8	23	27.1	50	26	5	36	65	7	3.629	28.1	5.770
34.92	1 3/8"	62.4	25	29.5	54	30	6	39	70	6	4.233	30.7	6.837
38.10	1 1/2"	67	27	32.68	58	32	6	42	75	6	4.233	33.8	8.388
41.27	1 5/8"	72.8	29	34.77	63	34	7	45	80	5	5.080	36.2	9.495
44.45	1 3/4"	77.4	32	37.95	67	36	7	48	85	5	5.080	39.4	11.31
50.80	2"	89	36	43.57	77	42	8	56	100	4.5	5.645	45.2	14.91
57.15	2 1/4"	101.7	42	49.02	88	48	9	65	115	4	6.350	50.8	18.87
63.50	2 1/2"	108.5	45	55.37	94	52	9	70	120	4	6.350	57.1	24.08
69.85	2 3/4"	121.4	50	60.56	105	60	10	74	130	3.5	7.257	62.6	28.8
76.20	3"	134.2	53	66.91	116	63	11	82	140	3.5	7.257	68.9	35.16

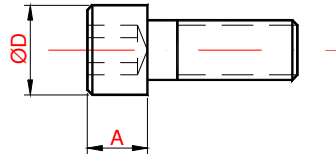


Constructora Española de Maquinaria, S.A.

Renom

C.I.F. A-08-047.300
 Ctra de Ribes, 50 – 08591 AIGUAFREDA (Barcelona)
 Apdo. 1255 – Tef +34 93 844 00 00 y +34 93 844 22 44 – Fax: +34 93 844 21 12
<http://www.cemsa-renom.com> e-mail: info@cemsa-renom.com

TORNILLO TIPO ALLEN CABEZA REDONDA



ETRICA	M:5	M:6	M:8	M:10	M:12	M:14	M:16	M:18	M:20	M:22	M:24
TWORTH	3/16"		1/4"	5/16"	3/8"	7/16"		1/2"	9/16"	5/8"		3/4"		7/8"		1"
D	9	10	11	13	16	17	18	19	22	24	27	30	30	33	36	38
A	5	6	6	8	10	11	12	12	14	16	14	19	20	22	24	25