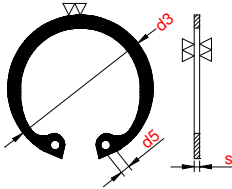


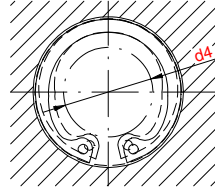


TABLAS DE MEDIDAS DE LOS ANILLOS NORMALIZADOS DE SEGURIDAD “T” PARA AGUJEROS

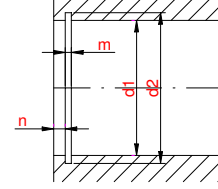
ANILLO LIBRE



ANILLO MONTADO



ALOJAMIENTO



DESIG. CONVENCIONAL Ø EJE d1	ANILLO					ALOJAMIENTO			
	S	d3	Tol.	d4	d5	d2	Tol.	H13 m	n
8	0.8	8.7		2.8	1	8.4		0.9	
9		9.8		3.5		9.4			0.6
10		10.8		3.1	1.2	10.4			
11		11.8	+0.36	3.9		11.4			0.75
12		13	-0.18	4.7	1.5	12.5			0.9
13		14.1		5.3		13.6			
14		15.1		6		14.6			
15		16.2		7	1.7	15.7			1.1
16		17.3		7.7		16.8			1.2
17		18.3		8.4		17.8			
18		19.5		8.9		19			
19		20.5		9.8		20			
20		21.5	+0.42	10.6		21			1.5
21		22.5	-0.21	11.6		22			
22		23.5		12.6	2	23			
24		25.9		14.2		25.2			
25		26.9		15		26.2			1.8
26		27.9		15.6		27.2			
28	1.2	30.1		17.4		29.4			1.3
30		32.1		19.4		31.4			2.1
31		33.4		19.6		32.7			
32		34.4	+0.50	20.2		33.7			2.6
34		36.5	-0.25	22.2		35.7			
35		37.8		23.2		37			
36		38.8		24.2		38			1.6
37		39.8		25		39			3
38		40.8		26		40			
40		43.5	+0.78	27.4		42.5			H12
42		45.5	-0.39	29.2		44.5			
45	1.75	48.5		31.6	2.5	47.5			1.85
47		50.5		33.2		49.5			3.8
48		51.5		34.6		50.5			
50		54.2		36		53			
52		56.2		37.6		55			
55		59.2		40.4		58			
56	2	60.2	+0.92	41.4		59			2.15
58		62.2	-0.46	43.2		61			
60		64.2		44.4		63			4.5
62		66.2		45.4		65			
63		67.2		47.4		66			
65		69.2		48.8		68			
68	2.5	72.5		51.4	3	71			2.65
70		74.5		53.4		73			
72		76.5		55.4		75			

DESIG. CONVENCIONAL Ø EJE d1	ANILLO					ALOJAMIENTO			
	S	d3	Tol.	d4	d5	d2	Tol.	H13 m	n
75		79.5	+0.92 -0.46	58.4		78			4.5
78	2.5	82.5		60	3	81			2.65
80		85.5		62		83.5			
82		87.5		64		85.5			
85		90.5		66.8		88.5			
88		93.5		69.8		91.5			H12
90		95.5		71.8		93.5			
92		97.5		73.6		95.5			3.15
95		100.5		76.4		98.5			
98		103.5	+1.08 -0.54	79		101.5			
100		105.5		81	3.5	103.5			
102		108		82.6		106			
105		112		85.6		109			
108		115		88		112			
110		117		88.2		114			
112		119		90		116			
115		122		93		119			
120		127		97		124			6
125		132		102		129			
130		137		107		134			
135		142		112		139			
140		147	+1.26 -0.63	117		144			4.15
145	4	152		122		149			
150		158		125		155			
155		164		130		160			
160		169		133		165			
165		174.5		138		170			
170		179.5		145		175			H13
175		184.5		149	4	180			7.5
180		189.5		153		185			
185		194.5		157		190			
190		199.5		162		195			
195		204.5	+1.44 -0.72	167		200			
200		209.5		171		205			
210		222		181		216			
220		232		191		226			
230		242		201		236			9
240		252		211		246			
250		262		221		256			
260	5	275	+1.62 -0.81	227		268			5.15
270		285		237		278			
280		295		247	5	288			12
290		305		257		298			
300		315		267		308			