



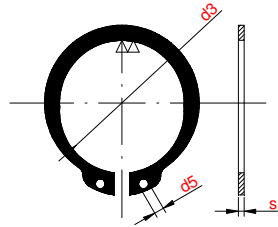
Constructora Española de Maquinaria, S.A.

C.I.F. A-08-047.300  
 Ctra de Ribes, 50 – 08591 AIGUAFREDA (Barcelona)  
 Apdo. 1255 – Tef +34 93 844 00 00 y +34 93 844 22 44 – Fax: +34 93 844 21 12  
<http://www.cemsa-renom.com> e-mail: [info@cemsa-renom.com](mailto:info@cemsa-renom.com)

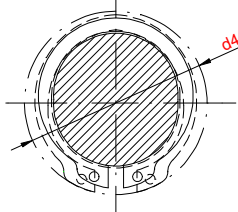
Renom

**TABLAS DE MEDIDAS DE LOS ANILLOS NORMALIZADOS DE SEGURIDAD “E” PARA EJES**

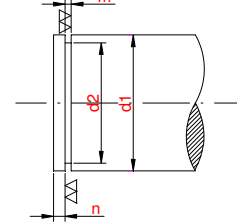
ANILLO LIBRE



ANILLO MONTADO



ALOJAMIENTO



DESIG. CONVENCIONAL ØEJE d1	ANILLO					ALOJAMIENTO			
	S h11	d3	Tol.	d4	d5	d2	Tol.	H13 m	n
3	0.4	2.7	+0.06 -0.012	7.2	0.8	2.8		0.5	0.3
4		3.7		8.8	1	3.8		0.7	
5	0.6	4.7	+0.075 -0.15	10.7		4.8		0.8	0.45
6	0.7	5.6		12.2	1.15	5.7		0.9	
7	0.8	6.5		13.8		6.7			0.6
8		7.4	+0.09	15.2	1.2	7.6			
9		8.4	-0.18	16.4		8.6			
10		9.3	+0.15 -0.30	17.6		9.6	h11		
11		10.2		18.6		10.5		1.1	0.75
12	1	11		19.6		11.5			0.9
13		11.9		20.8		12.4			1.1
14		12.9		22	1.7	13.4			1.2
15		13.8	+0.18 -0.36	23.2		14.3			
16		14.7		24.4		15.2			
17		15.7		25.6		16.2			
18		16.5		26.8		17			
19		17.5		27.8		18			
20		18.5		29		19		1.3	1.5
21		19.5		30.2		20			
22	1.2	20.5		31.4		21			1.7
24		22.2		33.8	2	22.9			
25		23.2	+0.21 -0.42	34.8		23.9			2.1
26		24.2		36		24.9			
28		25.9		38.4		26.6			2.6
29		26.9		39.6		27.6			
30		27.9		41		28.6			
32	1.5	29.6		43.4		30.3		1.6	3
34		31.5		45.8		32.3			
35		32.2	+0.25	47.2		33			
36		33.2	-0.50	48.2		34	h12		
38		35.2		50.6		36			
40		36.5		53		37.5			
42	1.75	38.5		56		39.5		1.85	3.8
45		41.5	+0.39	59.4		42.5			
48		44.5	-0.78	62.8	2.5	45.5			
50		45.8		64.8		47			
52		47.8		67		49			
55		50.8		70.4		52			
56	2	51.8		71.6		53		2.15	4.5
58		53.8	+0.46 -0.92	73.6		55			
60		55.8		75.8		57			
62		57.8		78		59			
63		58.8		79.2		60			

DESIG. CONVENCIONAL ØEJE d1	ANILLO					ALOJAMIENTO			
	S h11	d3	Tol.	d4	d5	d2	Tol.	H13 m	n
65		60.5		81.6		62			
68		63.5		85		65			4.5
70		65.5		87.2		67			
72		67.5	+0.46	89.4	3	69		2.65	
75	2.5	70.5	-0.92	92.8		72			
78		73.5		96.2		75			
80		74.5		98.2		76.5	h12		
82		76.5		101		78.5			
85		79.5		104		81.5			
88		82.5		107		84.5			5.3
90	3	84.5		109		86.5		3.15	
95		89.5		115	3.5	91.5			
100		94.5		121		96.5			
105		98	+0.54 -1.08	126		101			
110		103		132		106			
115		108		138		111			
120		113		143		116			
125		118		149		121			6
130		123		155		125			
135		128		160		131			
140		133		165		136			
145		138		171		141			
150	4	142		177		145		4.75	
155		146	+0.63 -1.26	182		150			
160		151		188		155			
165		155.5		193		160			
170		160.5		197		165			
175		165.5		202	4	170	h13		7.5
180		170.5		208		175			
185		175.5		213		180			
190		180.5		219		185			
195		185.5		224		190			
200		190.5		229		195			
210		198		239		204			
220		208	+0.72 -1.44	249		214			
230		218		259		224			9
240		228		269		234			
250	5	238		279		244			
260		245		293		252		5.15	
270		255		303		262			
280		265	+0.81	313	5	272			12
290		275	-1.62	323		282			
300		285		333		292			