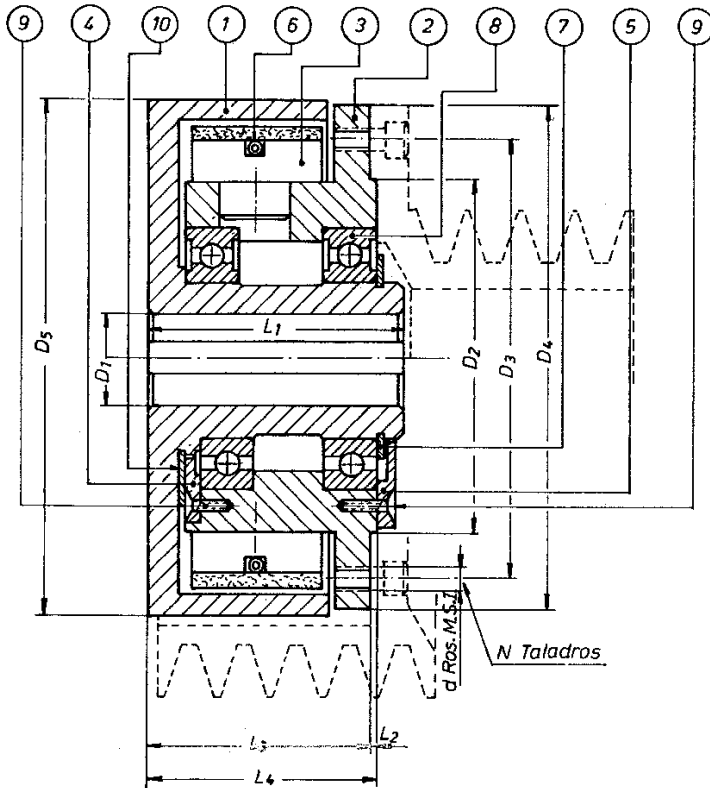




“E SERIES” LOADLESS STARTING CENTRIFUGAL AUTOMATIC CLUTCH TO BE SET ON THE LOAD SHAFT



SPARE PARTS IDENTIFICATION	
1:	SLEEVE
2:	CORE
3:	CENTRIFUGAL MASS
4:	LID
5:	LID
6:	SPRING
7:	SEEGER RING
8:	BEARING
9:	SCREW
10:	WASHER

KEYSEATS ACCORDING TO DIN 6885

- Loadless starting
- Avoids failures due to overloads or clogging.
- Allow less powerful engines to be used.
- Electrical accessories are no longer needed.
- For explosion engines, they can be automatically disconnected when idling.

Size	DIAMETERS(mm)					FIXING DRILL		LENGTHS(mm)			
	Max D1	D2	D3	D4		N	d	L1	L2	L3	L4
E-3	28	104	135	150	152	6	6	70	2	66	68
E-4	38	118	150	165	170	6	6	75	2	68	70
E-5	42	149	180	195	200	6	8	80	2	71	73
E-6	50	149	180	195	230	6	8	90	3	80	83
E-7	65	188	230	248	270	6	8	110	4	92	96
E-8	80	235	290	310	350	6	10	138	4	113	117

Size	MAXIMUM POWER (KW) FOR SEVERAL ROTATIVE SPEEDS (RPM)															
	300	500	750	960	1200	1450	1750	2000	2250	2500	2700	2860	3000	3200	3500	3800
E-3		0.18	0.552	1.18	2.21	4.05	7.14	10.7	14.7	19.1	20.6	22.1	22.8	24.3	26.5	29.4
E-4	0.059	0.29	1.03	2.06	4.05	7.36	12.5	19.14	22.8	25	27.23	29.44	30.9	32.4	35.3	
E-5	0.11	0.59	1.99	4.23	8.32	14.72	25.76	29.4	33.12	36.8	39.7	41.95	44.2			
E-6	0.25	0.88	2.94	5.89	12.36	22.1	38.3	53.7	60.35	67	72.13					
E-7	0.18	2.21	7.73	16.19	30.9	55.2	92	105.2	118.5							
E-8	1.47	7.14	23.55	50.8	98.6	173	212	For higher powers ask our technical department								

Powers shown in the tables can have 20% overloads. For harder applications ask our technical department.

If clutches are used as torque limiters and must be exposed to long slipping periods, you should ask our technical department so that, after analysing the heat dissipation, they can choose the most suitable mechanism.