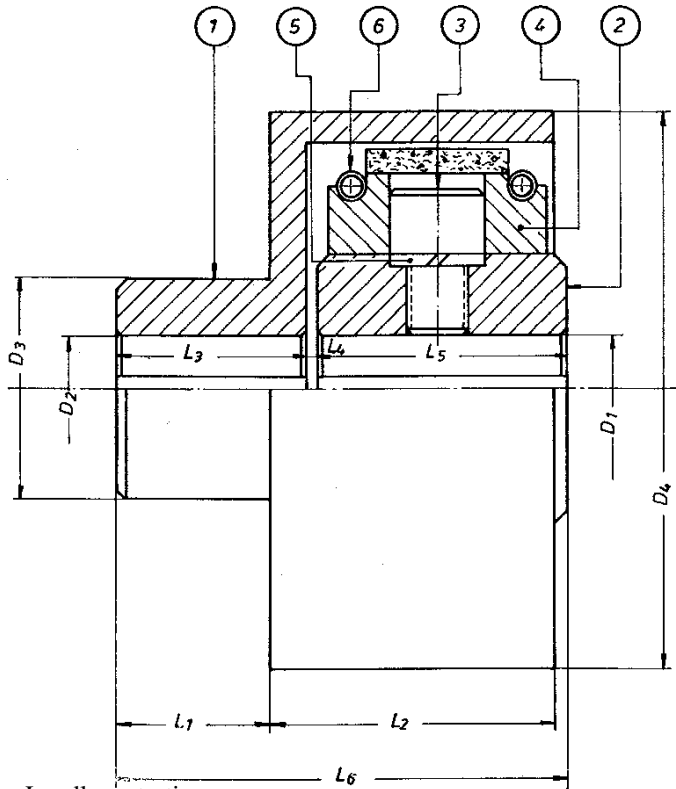




“D” SERIES LOADLESS STARTING AUTOMATIC CENTRIFUGAL CLUTCH TO BE SET BETWEEN ALIGNED SHAFTS



SPARE PARTS IDENTIFICATION	
1:	RECEPTOR ENVELOPE
2:	MOTOR CORE
3:	DRAGGING BOLT
4:	CENTRIFUGAL MASS
5:	GROWER WASHER
6:	SPRING

KEYSEATS ACCORDING TO 6885

Our units are delivered without drilling nor notching, but both of them can be done, by adding their additional cost, in case they are required by the customer.

- Loadless starting
- Avoids failures due to overloads or clogging.
- Allow less powerful engines to be used.

- Electrical accessories are no longer needed.
- For explosion engines, they can be automatically disconnected when idling.

Size	DIAMETERS (mm)				LENGTHS(mm)					
	Max D1	D2	D3	D4	L1	L2	L3	L4	L5	L6
D-0	18	18	35	90	22	48	30	2	40	72
D-1	25	25	45	104	26	54	35	2	45	82
D-2	30	30	50	115	31	59	40	2	50	92

Size	MAXIMUM POWER (KW) FOR SEVERAL ROTATIVE SPEEDS (RPM)															
	750	950	1200	1450	1700	1900	2000	2250	2500	2700	2900	3000	3200	3500	3800	4000
D-0		0.11	0.22	0.37	0.62	0.88	1.03	1.47	1.99	2.13	2.28	2.35	2.5	2.8	2.94	3.16
D-1	0.15	0.29	0.59	1.1	1.66	2.35	2.65	3.31	3.68	4.05	4.34	4.42	4.78	5.15	5.67	5.89
D-2	0.18	0.037	0.83	1.47	2.39	3.31	3.86	5.52	7.36	7.87	8.54	8.83	9.35	10.3	11.04	11.78

Powers shown in the tables can have 20% overloads. For harder applications ask our technical department.

If clutches are used as torque limiters and must be exposed to long slipping periods, you should ask our technical department so that, after analysing the heat dissipation, they can choose the most suitable mechanism.