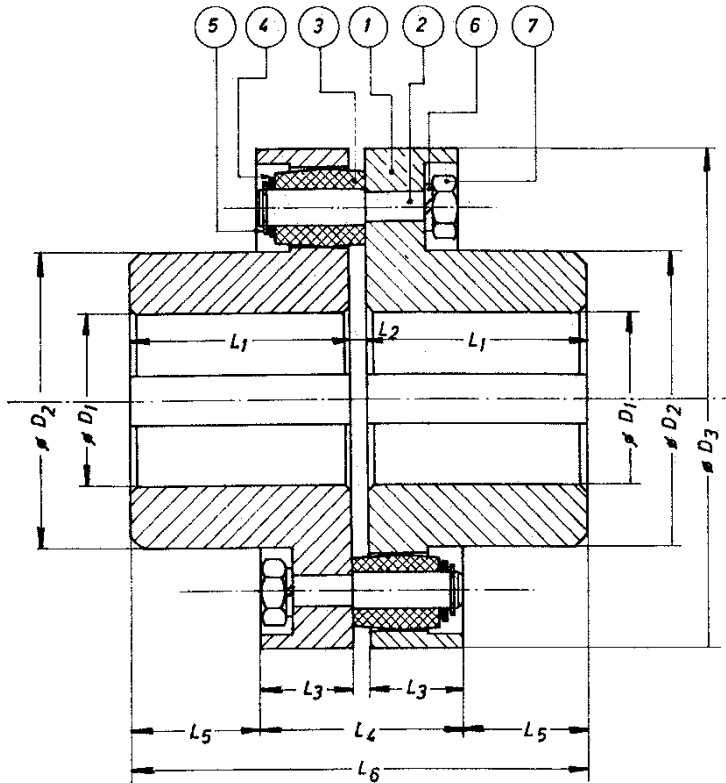




## FLEXIBLE COUPLING WITH RUBBER ELEMENTS



### SPARE PARTS IDENTIFICATION

- 1: PLATE
- 2: BOLT
- 3: RUBBER BUSHING
- 4: WASHER
- 5: SEEGER RING
- 6: GROWSER WASHER
- 7: FEMALE SCREW

### KEYSEATS ACCORDING TO DIN 6885

Our units are delivered without drilling nor notching, but both of them can be done, by adding their additional cost, in case they are required by the customer.

This coupling is suitable for dry work. If it is expected to work with oil it must be pointed out in the order so that the mechanism can be supplied with sythetic rubber.

We recommend a shaft fit k6 bore H7 for small diametres and a shaft fit j6 / bore H7 for bigger diametres.

Coupling Size	Power to 1 r.p.m (kw)	Torque (Nm)	Maximum Speed (rpm)	Diametres			Lengths						Weight (kg)
				D1 Max	D2	D3	L1	L2	L3	L4	L5	L6	
AE 4,3	0.0042	42.18	7500	25	40	90	45	4	24	52	21	94	2
AE 7,2	0.0074	70.63	6700	30	50	100	50	4	24	52	26	104	2.7
AE 11,5	0.012	112.81	6000	35	62	112	55	4	24	52	31	114	3.8
AE 18	0.0184	176.58	5300	40	65	125	60	4	28	60	32	124	5.5
AE 29	0.029	284.49	4800	45	80	140	70	4	28	60	42	144	7.5
AE 45	0.044	441.45	4200	50	85	160	80	4	35	74	45	164	11.5
AE 72	0.0736	706.32	3700	60	104	180	90	4	35	74	55	184	17
AE 100	0.103	981	3400	65	110	200	100	7	42	91	58	207	20
AE 144	0.147	1412.64	3000	75	128	225	110	7	42	91	68	227	30
AE 200	0.206	1962	2700	82	140	250	120	7	54	115	66	247	42
AE 290	0.294	2844.9	2400	90	158	280	130	7	54	115	76	267	56
AE 400	0.412	3924	2100	100	172	320	140	10	66	142	74	290	82
AE 580	0.596	5510	1850	120	210	360	160	10	66	142	94	330	116
AE 790	0.809	7749.9	1700	125	225	400	180	10	80	170	100	370	156
AE 1150	1.182	11281.5	1500	150	265	450	200	10	80	170	120	410	220
AE 1580	1.623	15499.8	1350	160	300	500	220	10	80	170	140	450	300
AE 4500	4.62	44145	950	200	380	710	260	15	145	305	115	535	786